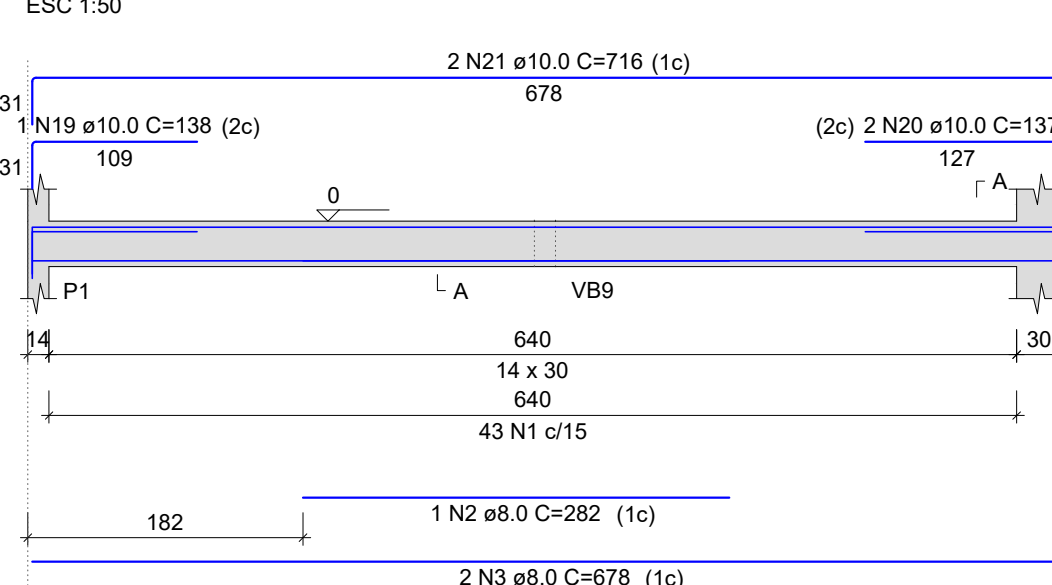
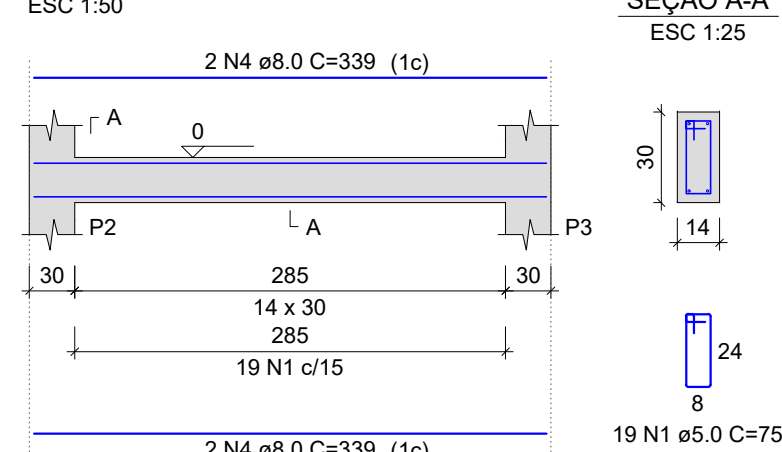


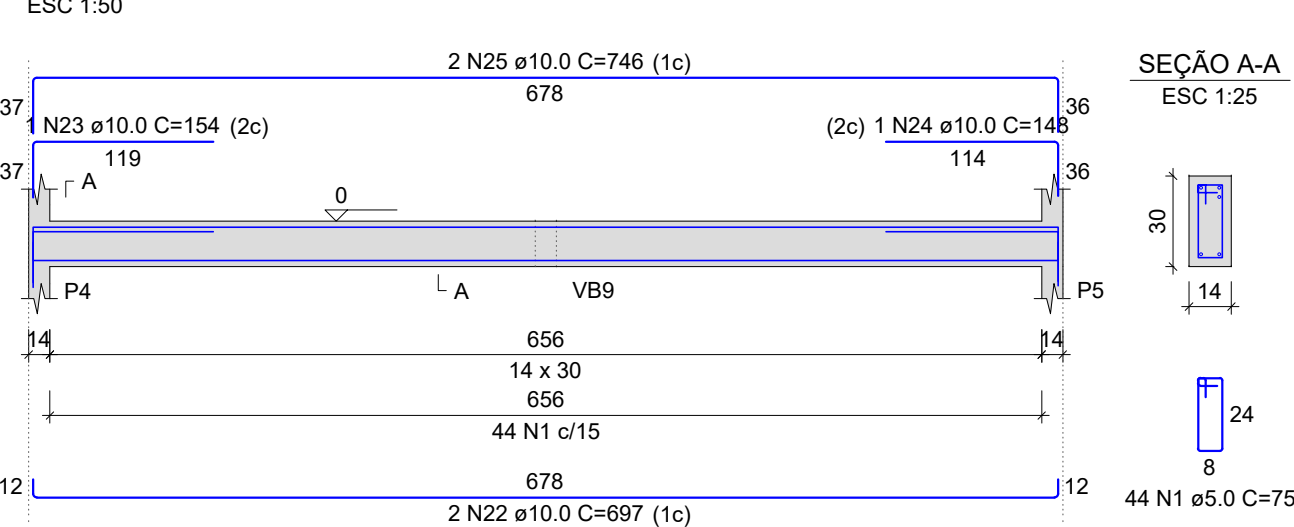
VB1  
ESC 1:50



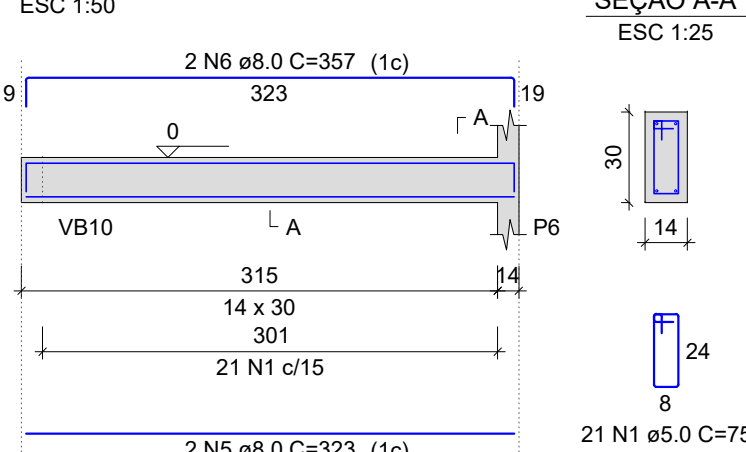
VB2  
ESC 1:50



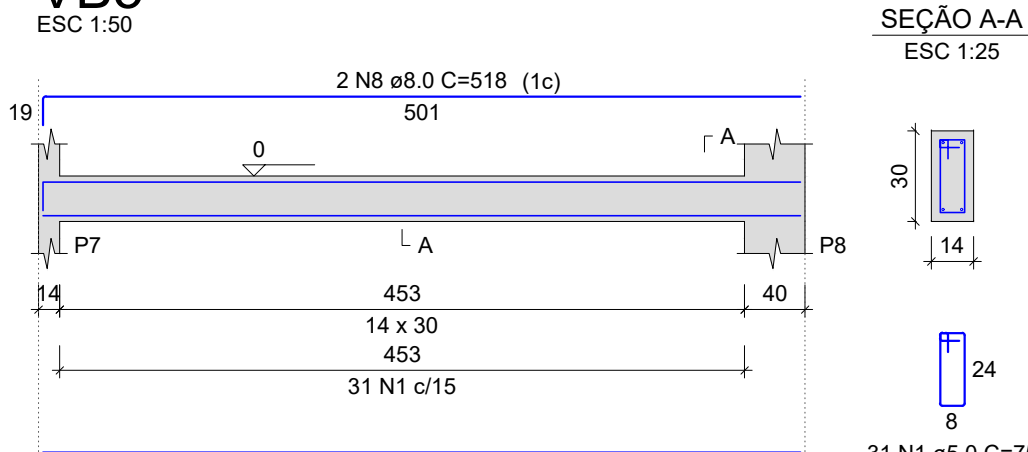
VB3  
ESC 1:50



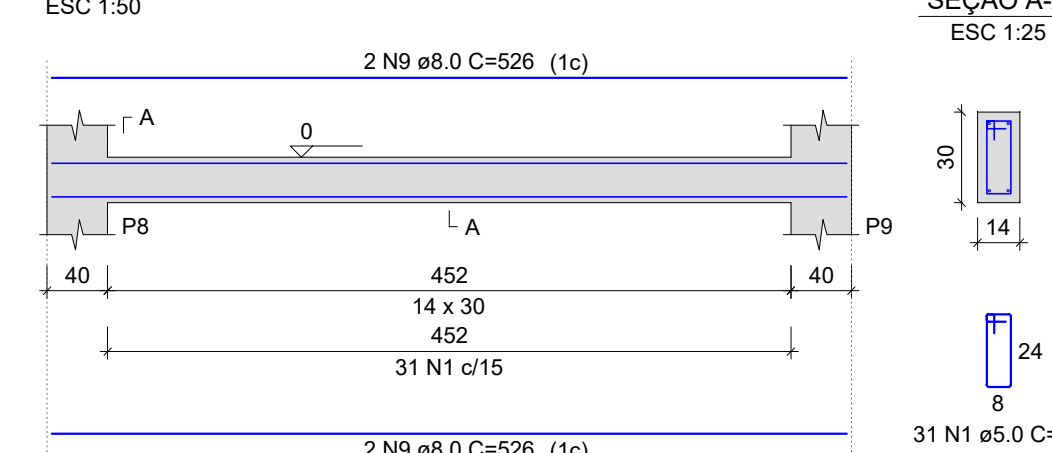
VB4  
ESC 1:50



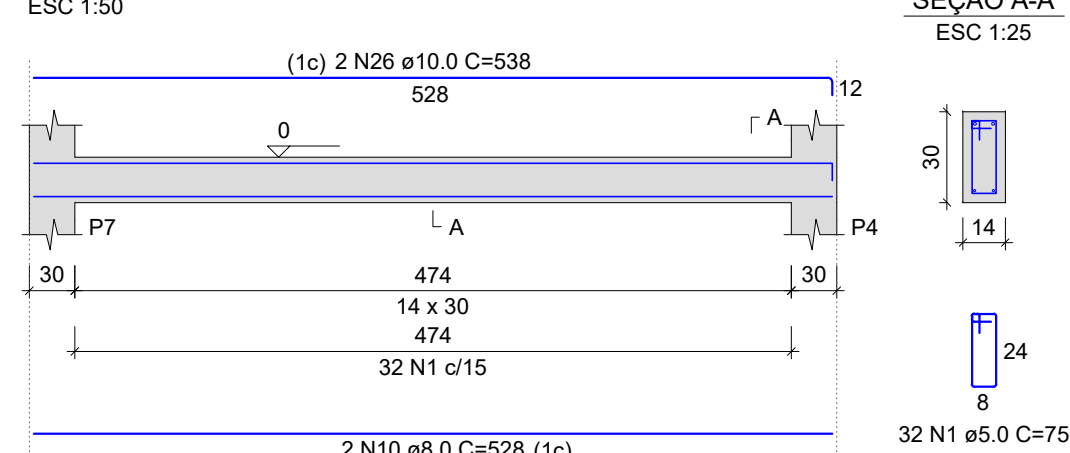
VB5  
ESC 1:50



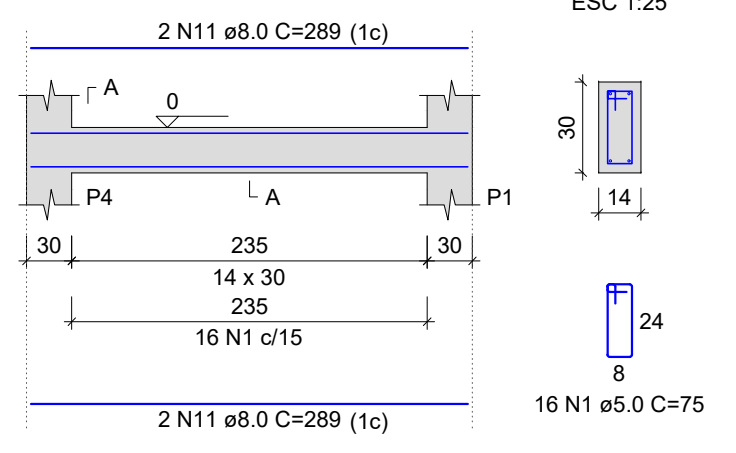
VB6  
ESC 1:50



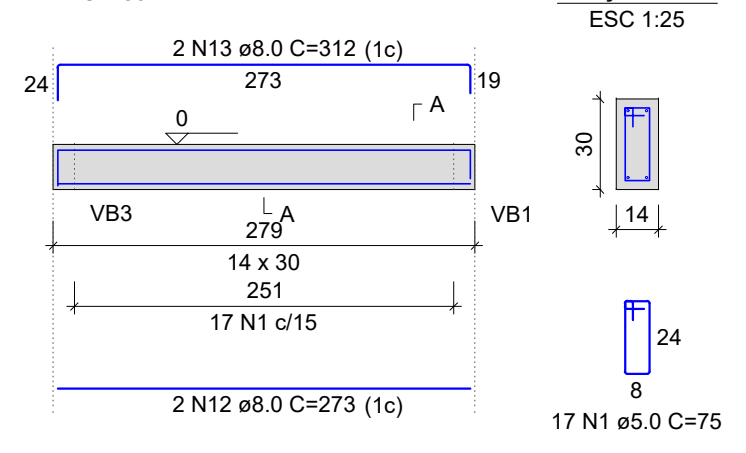
VB7  
ESC 1:50



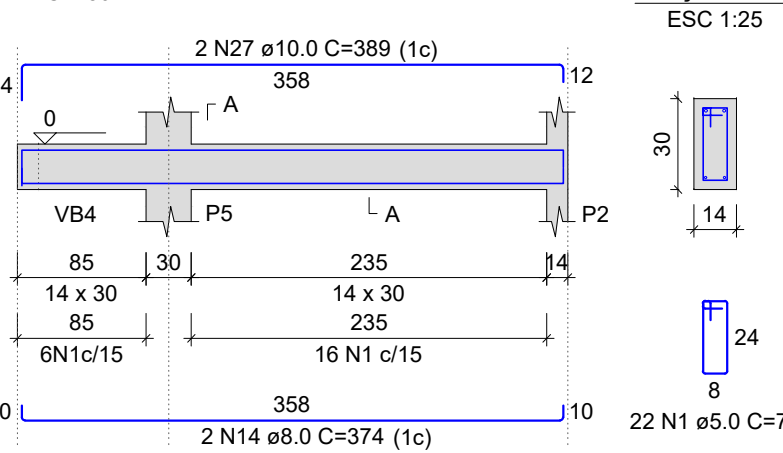
VB8  
ESC 1:50



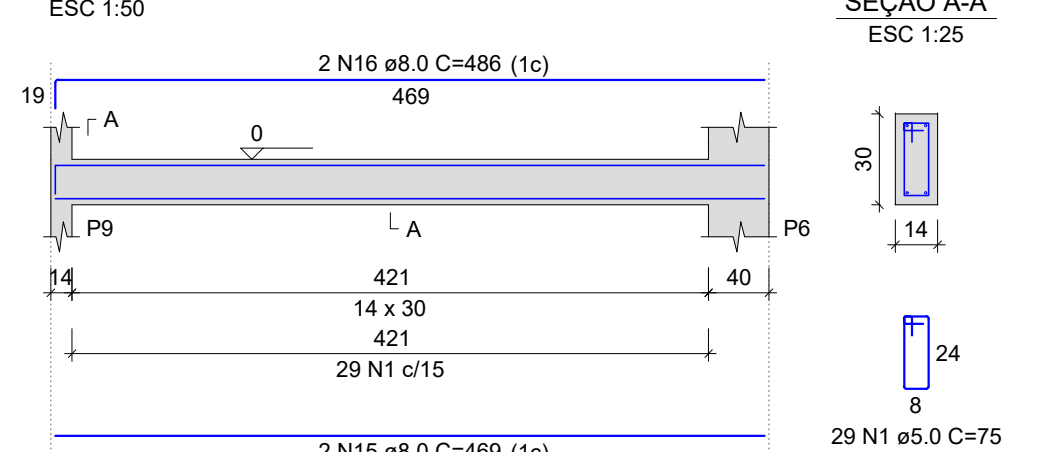
VB9  
ESC 1:50



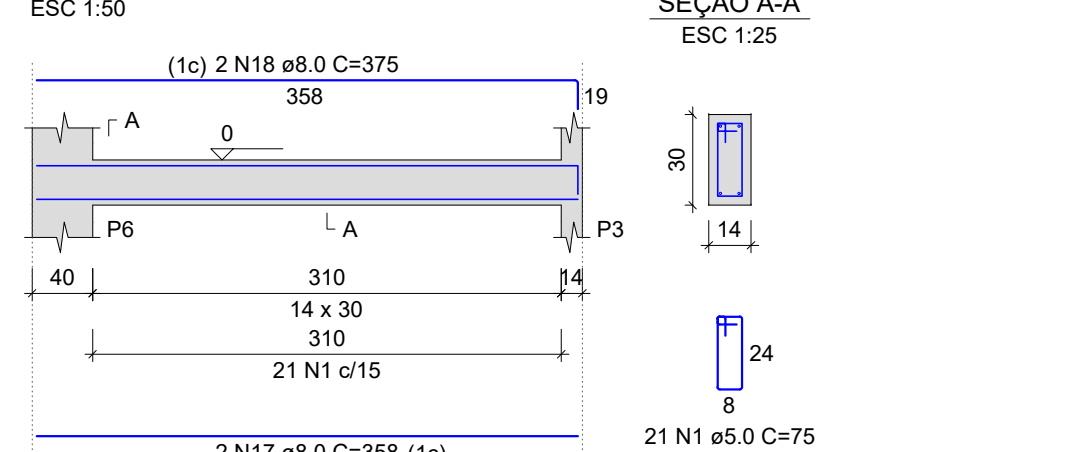
VB10  
ESC 1:50



VB11  
ESC 1:50



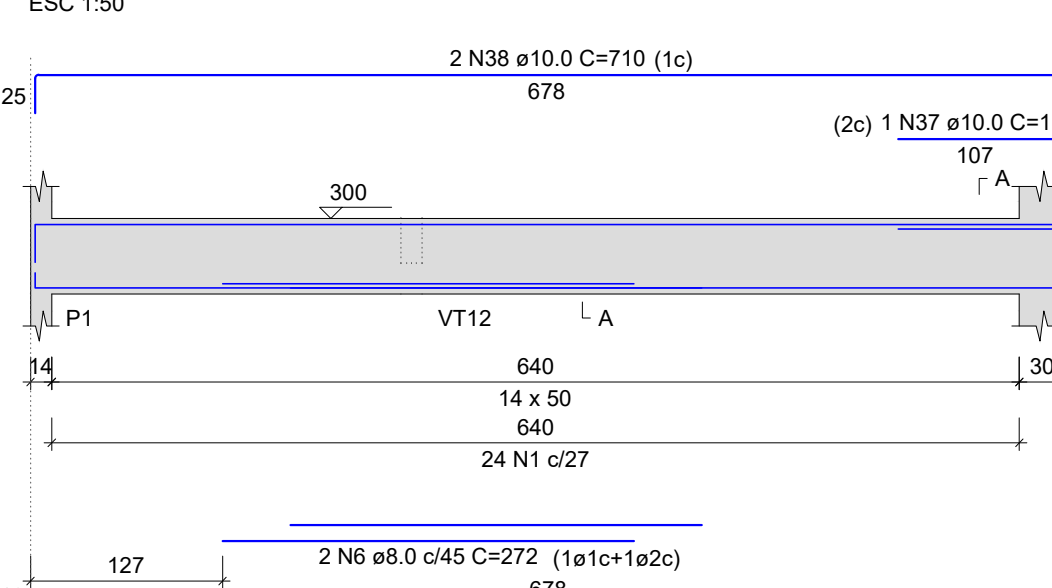
VB12  
ESC 1:50



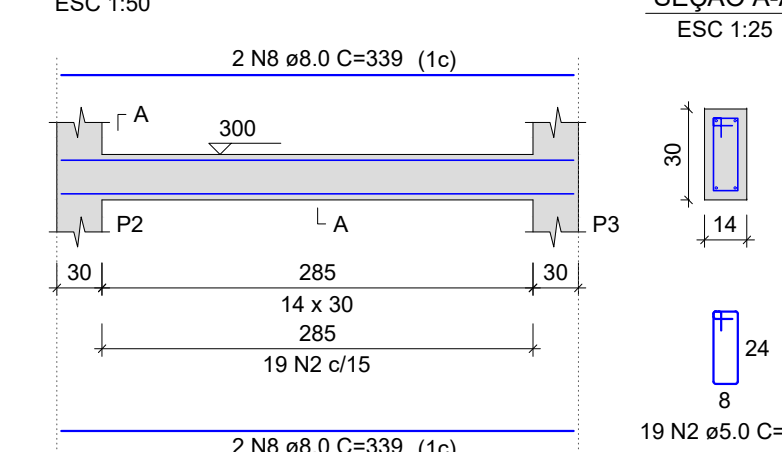
RELAÇÃO DO AÇO					
AÇO	N	DIAM (mm)	QUANT	C.UNIT (cm)	C.TOTAL (cm)
CA60	1	5.0	326	75	24450
CA50	2	8.0	1	282	282
	3	8.0	2	678	1356
	4	8.0	4	339	1356
	5	8.0	2	323	646
	6	8.0	2	357	714
	7	8.0	2	501	1002
	8	8.0	2	518	1036
	9	8.0	2	538	1076
	10	8.0	2	528	1056
	11	8.0	2	289	1156
	12	8.0	2	273	546
	13	8.0	2	312	624
	14	8.0	2	374	748
	15	8.0	2	469	938
	16	8.0	2	486	972
	17	8.0	2	538	1076
	18	8.0	2	375	750
	19	10.0	1	154	154
	20	10.0	2	137	274
	21	10.0	2	716	1432
	22	10.0	2	697	1394
	23	10.0	1	154	154
	24	10.0	1	148	148
	25	10.0	2	146	292
	26	10.0	2	538	1076
	27	10.0	2	389	778

RESUMO DO AÇO			
AÇO	DIAM (mm)	C.TOTAL (m)	PESO + 10% (kg)
CA60	8.0	160	69.5
CA50	10.0	69.5	71.5
CA60	5.0	244.5	41.5
PESO TOTAL (kg)			
CA50		116.2	
CA60		41.5	
Volume de concreto (C-25) = 2.26 m³			
Área de forma = 39.90 m²			

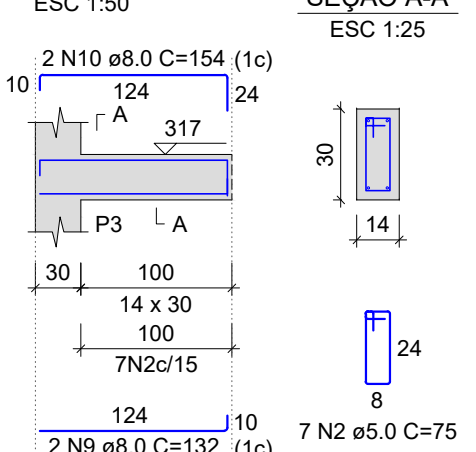
VT1  
ESC 1:50



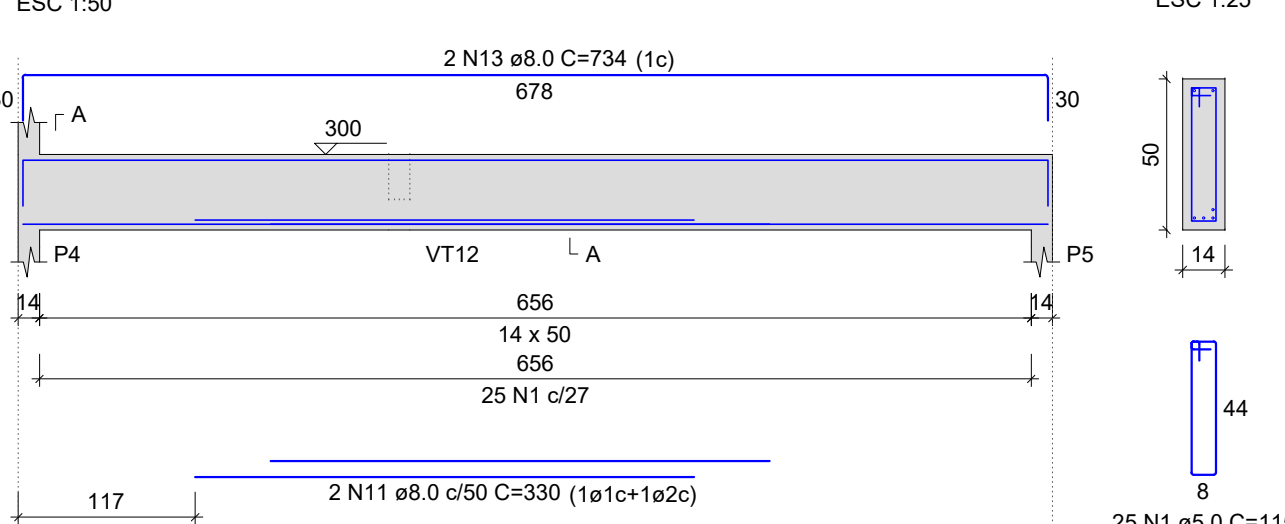
VT2  
ESC 1:50



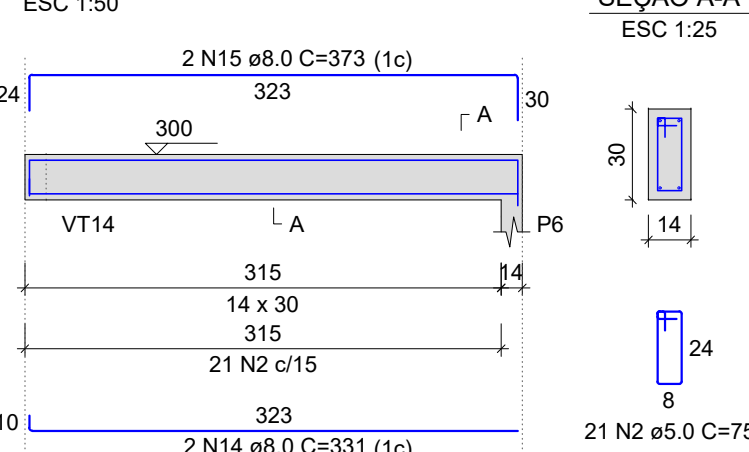
VT3  
ESC 1:50



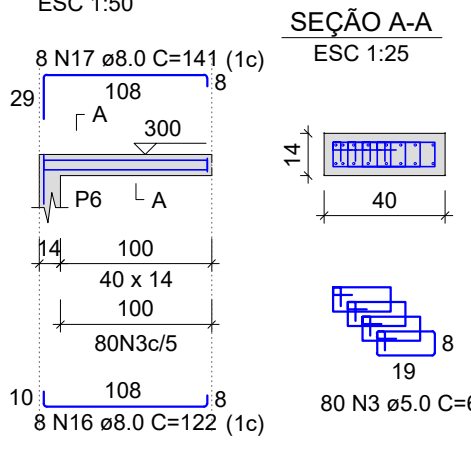
VT4  
ESC 1:50



VT5  
ESC 1:50



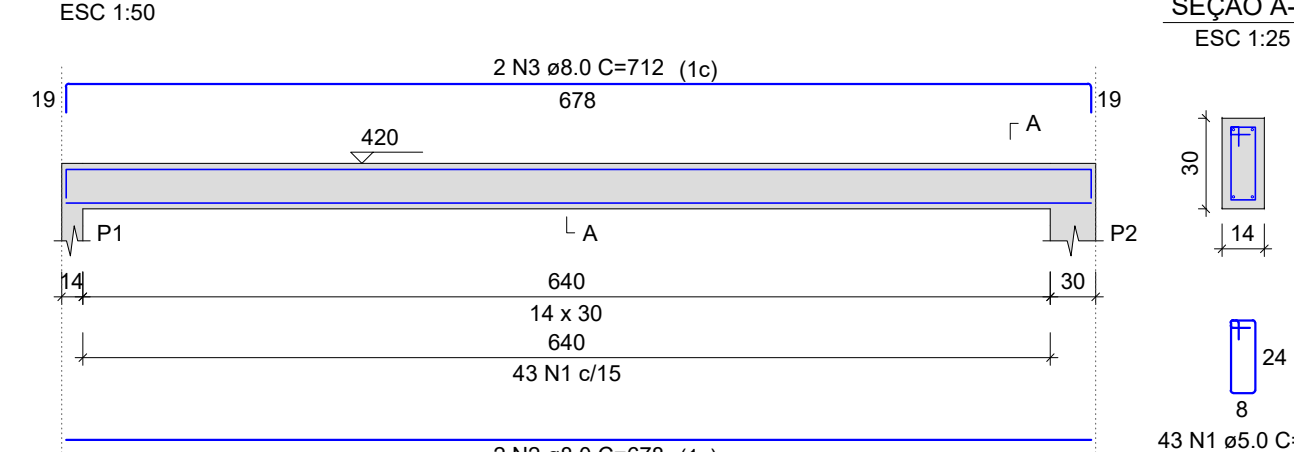
VT6  
ESC 1:50



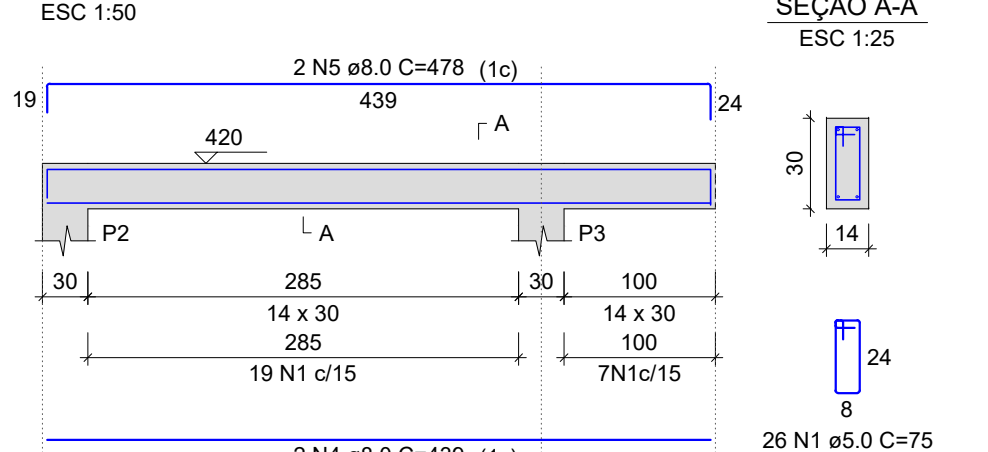
RELAÇÃO DO AÇO					
AÇO	N	DIAM (mm)	QUANT	C.UNIT (cm)	C.TOTAL (cm)
CA60	1	5.0	49	115	5635
VT4	2	5.0	137	75	10275
VT7	3	5.0	80	65	5200
VT10	4	5.0	82	65	5330
VT13	5	5.0	60	67	4020
VT15	6	8.0	2	272	544
VT17	7	8.0	2	686	1372
	8	8.0	4	330	1320
	9	8.0	2	132	264
	10	8.0	2	154	308
	11	8.0	2	330	660
	12	8.0	2	678	1356
	13	8.0	2	734	1468
	14	8.0	2	531	1062
	15	8.0	2	373	746
	16	8.0	8	122	976
	17	8.0	8	141	1128
	18	8.0	2	548	1096
	19	8.0	2	501	1002
	20	10.0	2	572	1144
	21	8.0	2	14	28
	22	8.0	2	96	192
	23	8.0	2	528	1056
	24	8.0	2	289	578
	25	8.0	2	307	614
	26	8.0	2	307	614
	27	8.0	2	307	614
	28	8.0	2	307	614
	29	8.0	6	72	432
	30	8.0	4	365	1464
	31	8.0	2	362	724
	32	8.0	2	469	938
	33	8.0	6	75	450
	34	8.0	2	413	826
	35	8.0	2	515	1030
	36	10.0	2	710	1420
	37	10.0	1	117	117
	38	10.0	2	710	1420
	39	10.0	2	292	584

RESUMO DO AÇO			
AÇO	DIAM (mm)	C.TOTAL (m)	PESO + 10% (kg)
CA50	8.0	200.3	113
CA60	10.0	21.2	14.4
CA60	5.0	306.2	55.8
PESO TOTAL (kg)			
CA50		127.4	
CA60		55.8	
Volume de concreto (C-25) = 3.13 m³			
Área de forma = 52.33 m²			

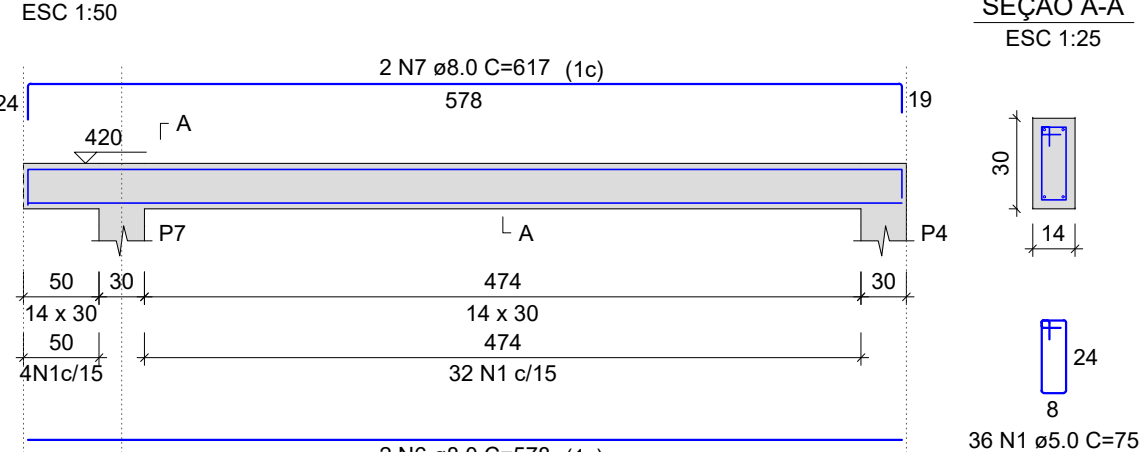
VC1  
ESC 1:50



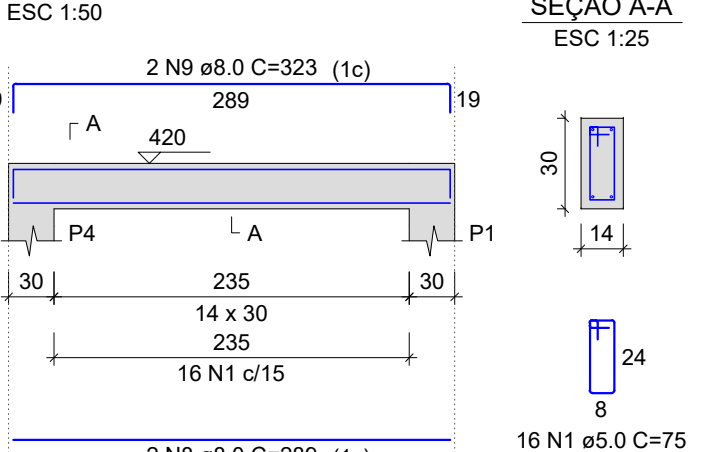
VC2  
ESC 1:50



VC3  
ESC 1:50



VC4  
ESC 1:50



RELAÇÃO DO AÇO					
VC1 VC4	VC2		VC3		
AÇO	N	DIAM (mm)	QUANT	C.UNIT (cm)	C.TOTAL (cm)
CA60	1	5.0	121	75	9075
CA50	2	8.0	2	678	1356
	3	8.0	2	712	1424
	4	8.0	2	439	878
	5	8.0	2	478	956
	6	8.0	2	578	1156
	7	8.0	2	617	1234
	8	8.0	2	289	578
	9	8.0	2	323	646

RESUMO DO AÇO			
AÇO	DIAM (mm)	C.TOTAL (m)	PESO + 10% (kg)
CA50	8.0	82.3	35.7
CA60	10.0	30.8	15.4
PESO TOTAL (kg)			
CA50		35.7	
CA60		15.4	

Volume de concreto (C-25) = 0.84 m³

Área de forma = 14.86 m²

Revisão	Assunto	Responsável	Data
R00	Entrega projeto	Rogério	12/11/21
R01	Concepção inicial	Rogério	05/11/21

PROJETO ESTRUTURAL

TIPO DA OBRA

CONSTRUÇÃO REFEITÓRIO

PROPRIETÁRIO

ESCOLA MUNICIPAL ALEXSANDRO SIERRA  
RUA 02, QUADRA 08, LOTE 10 E 11, JARDIM CAROLINA, NOBRES - MT

LOCAL

RUA 02, QUADRA 08, LOTE 10 E 11, JARDIM CAROLINA, NOBRES - MT

AUTOR DO PROJETO

INGENHEIRO CIVIL  
LUCAS DANIEL RODRIGUES DA SILVA  
CREA-MT 045527

RESPONSÁVEL TÉCNICO

INGENHEIRO CIVIL  
LUCAS DANIEL RODRIGUES DA SILVA  
CREA-MT 045527

ASSUNTO DO PROJETO

ARMADAÇÃO DAS VIGAS PAV-BALDRAME

PROJETO ARMADURAS

ESCALA - INDICADA

NOVEMBRO/2021

Número de Fôlhas

03/64